

PART OF THE NE.1/4, OF SECTION 5, T.5N., R.2W., S.L.B. & M.
THE COURTYARD AT GREEN FARM PHASE 2

IN WEST HAVEN CITY

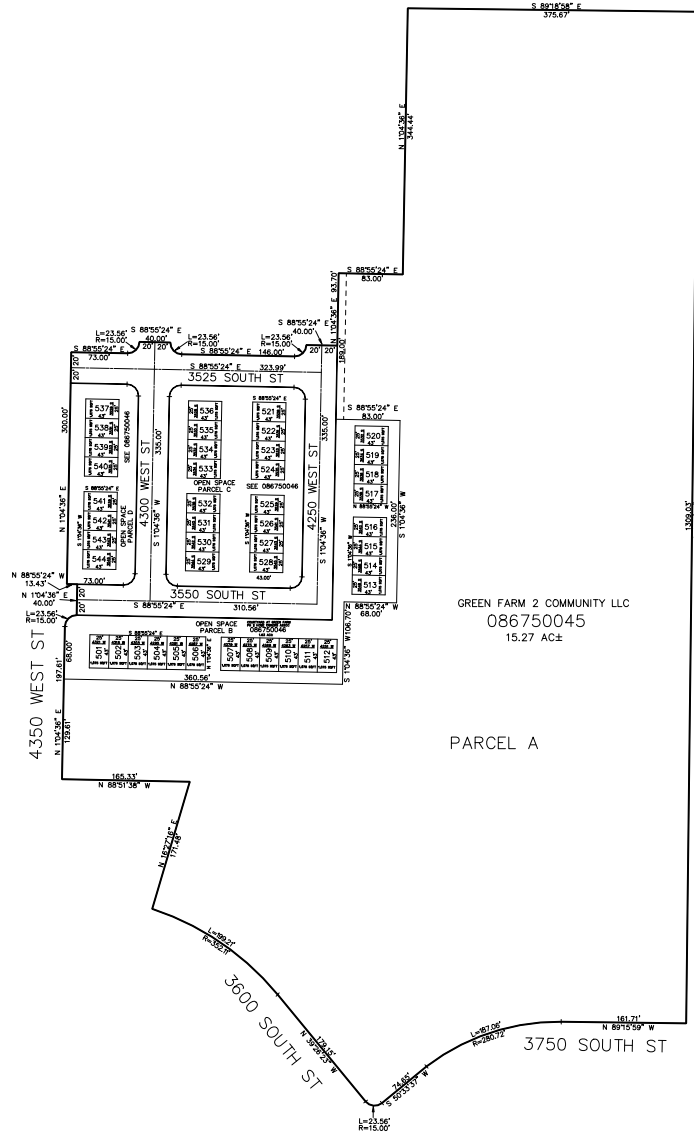
TAXING UNIT: 278

SCALE 1" = 125'

SEE PAGE 37-1

SEE PAGE 37-1

UNIT SERIAL #	OWNERSHIP	UNIT SERIAL #	OWNERSHIP
501 086750001	GREEN FARM 2 COMMUNITY LLC	524 086750024	GREEN FARM 2 COMMUNITY LLC
502 086750002	GREEN FARM 2 COMMUNITY LLC	525 086750025	GREEN FARM 2 COMMUNITY LLC
503 086750003	GREEN FARM 2 COMMUNITY LLC	526 086750026	GREEN FARM 2 COMMUNITY LLC
504 086750004	GREEN FARM 2 COMMUNITY LLC	527 086750027	GREEN FARM 2 COMMUNITY LLC
505 086750005	GREEN FARM 2 COMMUNITY LLC	528 086750028	GREEN FARM 2 COMMUNITY LLC
506 086750006	GREEN FARM 2 COMMUNITY LLC	529 086750029	GREEN FARM 2 COMMUNITY LLC
507 086750007	GREEN FARM 2 COMMUNITY LLC	530 086750030	GREEN FARM 2 COMMUNITY LLC
508 086750008	GREEN FARM 2 COMMUNITY LLC	531 086750031	GREEN FARM 2 COMMUNITY LLC
509 086750009	GREEN FARM 2 COMMUNITY LLC	532 086750032	GREEN FARM 2 COMMUNITY LLC
510 086750010	GREEN FARM 2 COMMUNITY LLC	533 086750033	GREEN FARM 2 COMMUNITY LLC
511 086750011	GREEN FARM 2 COMMUNITY LLC	534 086750034	GREEN FARM 2 COMMUNITY LLC
512 086750012	GREEN FARM 2 COMMUNITY LLC	535 086750035	GREEN FARM 2 COMMUNITY LLC
513 086750013	GREEN FARM 2 COMMUNITY LLC	536 086750036	GREEN FARM 2 COMMUNITY LLC
514 086750014	GREEN FARM 2 COMMUNITY LLC	537 086750037	GREEN FARM 2 COMMUNITY LLC
515 086750015	GREEN FARM 2 COMMUNITY LLC	538 086750038	GREEN FARM 2 COMMUNITY LLC
516 086750016	GREEN FARM 2 COMMUNITY LLC	539 086750039	GREEN FARM 2 COMMUNITY LLC
517 086750017	GREEN FARM 2 COMMUNITY LLC	540 086750040	GREEN FARM 2 COMMUNITY LLC
518 086750018	GREEN FARM 2 COMMUNITY LLC	541 086750041	GREEN FARM 2 COMMUNITY LLC
519 086750019	GREEN FARM 2 COMMUNITY LLC	542 086750042	GREEN FARM 2 COMMUNITY LLC
520 086750020	GREEN FARM 2 COMMUNITY LLC	543 086750043	GREEN FARM 2 COMMUNITY LLC
521 086750021	GREEN FARM 2 COMMUNITY LLC	544 086750044	GREEN FARM 2 COMMUNITY LLC
522 086750022	GREEN FARM 2 COMMUNITY LLC		
523 086750023	GREEN FARM 2 COMMUNITY LLC		



SEE PAGE 35

10' UTILITY & DRAINAGE EASEMENTS EACH
SIDE OF PROPERTY LINES AS INDICATED
BY DASHED LINES EXCEPT AS OTHERWISE
SHOWN.

SEE PAGE 37-1

FOR COMPLETE ENC DATA SEE
ORIGINAL DEDICATION PLAT IN
BOOK 91, PAGE 40 & 41 OF RECORDS.